

## MaxiLog2 Temperature and Humidity Data Logger

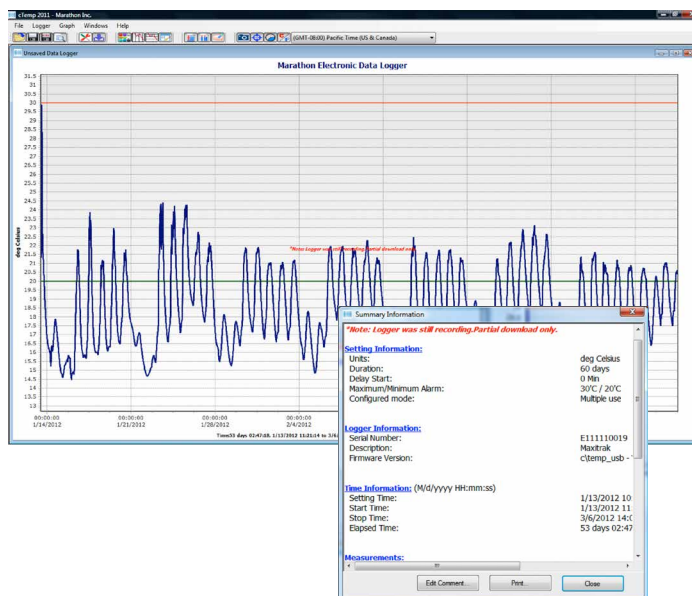
The MaxiLog2 enjoys USB connectivity in a compact package. Available in single or multi-use, this device fits easily into existing validated packaging and displays critical information on the LCD display. With insight at a glance, cold chain personnel can make informed receipt decisions and ensure critical temperature profiles have been maintained. MaxiLog2 supports full data download and custom report creation with free-to-use software.



### MaxiLog2

With temperature and temperature + humidity options, sensitive assets have never been easier to monitor. Time-stamped temperature data is simply viewed, and reports created for internal records or provided to stakeholders.

- Single-use or multi-use, user programmable
- Temperature and temperature + RH configurations
- Current temperature, run time and time over alarm conditions displayed
- No cables required to read- just plug into PC



	<b>MaxiLog2 8118-S (single-use) 8118-M (multi-use)</b>	<b>MaxiLog2 RH 7070 (single-use) 70071 (multi-use)</b>
<b>Recording Type</b>	Single-use, multi-use user programmable	Single-use, multi-use user programmable
<b>Temperature Measurement Range</b>	<b>Device:</b> -29C to +72°C / -20°F to +162°F	<b>Device:</b> -29C to +72°C / -20°F to +162°F
<b>Temperature Accuracy Range</b>	0.2°C at 0°C to 10°C, 1.0°C at extremes / 0.36°F at 32°F to 50°F 2.0°C at extremes	0.2°C at 0°C to 10°C, 1.0°C at extremes / 0.36°F at 32°F to 50°F 2.0°C at extremes Humidity: +/- 2%, +/- 4% at extremes
<b>Temperature Resolution</b>	0.1°C / 0.2°F	0.1°C / 0.2°F
<b>Data Storage Capacity</b>	8K	8K temperature   8K humidity
<b>Battery Life / Type</b>	1 year operating life / 2 year shelf life / 3V lithium coin cell	1 year operating life / 2 year shelf life / 3V lithium coin cell
<b>Data Sampling Interval</b>	2 seconds to 36 hours	2 seconds to 36 hours
<b>Start Up Delay</b>	2 seconds to 36 hours	2 seconds to 36 hours
<b>Alarm Programming</b>	Programmable high and low limits. Alarm triggers when limits are exceeded.	Programmable high and low limits. Alarm triggers when limits are exceeded.
<b>Alarm Modes</b>	Exceed Limit	Exceed Limit
<b>Alarm Reset Options</b>	Multi-Use: Alarm is reset when logger is erased and reprogrammed	Multi-Use: Alarm is reset when logger is erased and reprogrammed
<b>Alarm Notifications</b>	Alarm symbol appears when alarm has been triggered	Alarm symbol appears when alarm has been triggered
<b>Indicators</b>	LCD Screen	LCD Screen
<b>Start Up Options</b>	Push button automatic start with optional delay	Push button automatic start with optional delay
<b>Dimensions</b>	8.8 cm (l) x 3.5 cm (w) x 1.5 cm (h) 3.5 in (l) x 1.4 in (w) x 0.6 in (h)	8.8 cm (l) x 3.5 cm (w) x 1.5 cm (h) 3.5 in (l) x 1.4 in (w) x 0.6 in (h)
<b>Weight</b>	33 g / 1.16 oz	33 g / 1.16 oz
<b>Quality Assurance Certifications</b>	CE, UKCA, RTCA, NIST Traceable Certificate of Calibration and RoHS compliant	CE, UKCA, RTCA, NIST Traceable Certificate of Calibration and RoHS compliant
<b>Minimum System Requirements</b>	Windows XP, Vista: 7, 8, 10 and 11	Windows XP, Vista: 7, 8, 10 and 11
<b>Required Software</b>	Maxithermal2	Maxithermal2
<b>Computer Interface</b>	Built-in USB A	Built-in USB A
<b>Warranty</b>	1 Year	1 Year
<b>Ship Air, Ground, Ocean in Accordance with</b>	UN 3091, Packing Instruction 970 Section II – Excepted Lithium Metal and Lithium Alloy Cells and Batteries; IATA DG, IMDG Special Provision 188.1; U.S. per 49 CFR §173.185, Canada per TDG Special Provision 34 (1); W. Europe per ADR Special Provision 188(a) and 188(f)(i).	